



# CAPABILITY STATEMENT

**Revegetation & Land Restoration Services**

- › Rivers, creeks and waterways
- › Erosion control and stabilisation plantings
- › Wetland plantings
- › Habitat restoration works





---

## OUR CLIENTS AND AWARDS

AE service a wide range of clients including greenfield, commercial and industrial developers, local councils, tier one civil contractors, engineering and landscape consultancies, government agencies and NGO's. We have won numerous awards for our works including the following recent awards.

**2016 - Australian Institute of Landscape Architects** - Excellence, National Land Conservation Award, Gum Scrub Creek restoration Officer

**2016 - Premiers Sustainability Award Finalist**  
Environmental Protection - Armstrong Creek Waralilly restoration

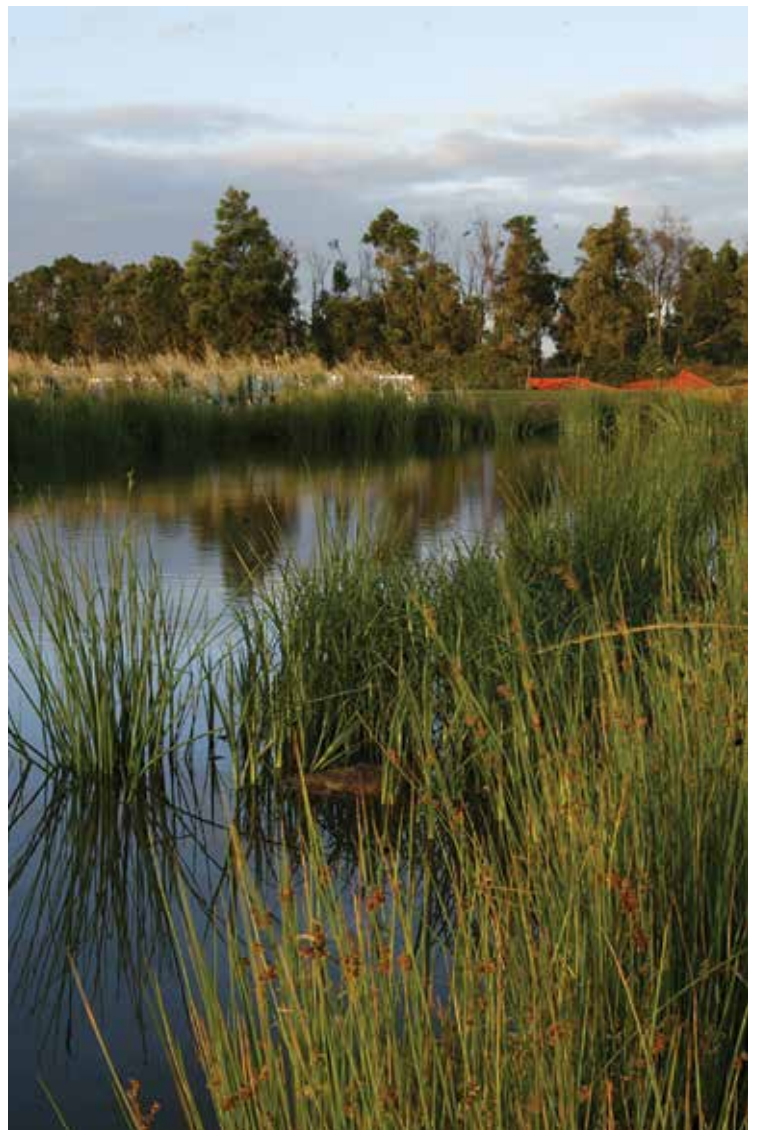
**2016 - National Stormwater Awards, Stormwater Australia** - Excellence in Integrated Stormwater Design - Armstrong Creek Waralilly restoration

**2016 Society of Ecological Restoration Australasia (SERA)** - Excellence award for Restoration Practice for Project <50ha  
- The Waterways, Braeside, completed 2003

---

## PROJECTS

Australian Ecosystems has completed close to 1,000 land restoration projects in the past 20 years. On the following pages are a sample of some of the significant recent projects we have undertaken where our crews have planted over 800 plants per person per day.





**Armstrong Creek Corridor, Waralily Estate, Armstrong Creek**

Construction of several kilometres of creek corridor in a housing estate. Activities included final grading, installation of rockwork and major tree trunks and stags, several kilometres of concrete path and street furniture, installation of mulch and close to 1 million locally indigenous

plants along the creekline at Armstrong Creek Waralily Estate. The estate has been constructed in several stages, and Australian Ecosystems construction division have worked collaboratively with our nursery and maintenance teams on all elements of the landscape. This site is thriving and is a major environmental asset within the City of Greater Geelong region.

**Award Winning: 2016 - Premiers Sustainability Award - Finalist - Environmental Protection. 2016 - Stormwater Australia - Excellence - National Integrated Stormwater Design**



**Gum Scrub Creek Corridor, Officer**

Australian Ecosystems managed all aspects of this major 2km creekline rehabilitation project in South East Melbourne, including site preparation and initial weed

control, seed collection, plant sourcing, installation of 6 ha of jutematting, 400,000 plants and maintenance of all plantings over 3 years. The site was handed over in 2016 in great condition with 100% cover of indigenous vegetation, with less than 1% weed cover.



**Award Winning: 2016 - Australian Institute of Landscape Architects - Excellence - National Land Conservation. 2015 - Stormwater Victoria - Excellence - Integrated Stormwater Design.**



### Yellingbo Nature Conservation Reserve

In 2014 and 2016 Greening Australia worked with Australian Ecosystems to deliver a complex planting of over 500,000 trees and shrubs to improve and extend habitat for the critically endangered Helmeted Honeyeater and Lowland Leadbeaters Possum. This project was unique in that the planting

was undertaken amongst existing vegetated habitat in remote locations, and required considerable logistical planning, physical strength and stamina of the crews, sensitivity to working within habitat for endangered animals, and stakeholder management. This project required delivery of 20,000 plants per day, which were grown to complex ecological specifications.



### Victorian Desalination Plant, Wonthaggi

Australian Ecosystems worked in partnership with Thiess Degremont Joint Venture to undertake one of the largest and most complex landscape projects in Australia. We assisted in writing species lists for the project, collected seed, propagated and planted 2.8

million plants, installed 100,000 cubic meters of mulch and over 5 hectares of jute matting. Our team constructed the internal feature landscape of the plant including final grading, shaping, installation of topsoil, formation of formal garden beds, granitic sand areas, and restoration of the 200 hectare coastal park surrounding the plant which was previously farmland.

**Award Winning: 2012 - Australian Institute of Landscape Architects - Excellence - Research & Communication**



---

## Our Products & Services

- › Plant Supply and Nursery
- › Landscape Construction
- › Revegetation, Wetlands and Raingardens
- › Landscape Maintenance
- › Urban Food Production
- › Consultancy